

Palmer Rd between Quadra St and Cumberland Rd

November 24, 2020 To November 27, 2020



The data presented here is for information purposes only and should not be considered authoritative for construction, geotechnical, engineering, navigational, legal, or other site-specific uses. The information shared is owned by the Transportation Division of the Engineering Department at the District of Saanich. Accuracy is not guaranteed.

Start Date: 23-Nov-20
 Start Time: 0:30
 Station ID: R0834-01

Location 1: Palmer Rd between Quadra St and Cumberland Rd

Note:

DATE:	November 23, 2020		November 24, 2020		November 25, 2020		November 26, 2020		November 27, 2020		WK AVG		WK AVG	HOURLY
	MON		TUE		WED		THURS		FRI		EB	WB	CH 1+2	%
Time:	EB	WB	EB	WB	EB	WB	EB	WB	EB	WB	EB	WB		
12-1 AM			2	0	1	1	1	0			1	0	2	0.5%
1-2 AM			2	0	2	0	2	0			2	0	2	0.6%
2-3 AM			0	0	0	0	0	0			0	0	0	0.0%
3-4 AM			0	1	0	1	0	0			0	1	1	0.2%
4-5 AM			0	0	0	1	0	1			0	1	1	0.2%
5-6 AM			1	0	0	1	0	2			0	1	1	0.4%
6-7 AM			3	4	2	0	1	0			2	1	3	1.0%
7-8 AM			2	10	1	9	2	13			2	11	12	3.8%
8-9 AM			8	13	10	20	5	16			8	16	24	7.4%
9-10 AM			6	15	6	10	11	13			8	13	20	6.3%
10-11 AM			8	9	17	12	9	17			11	13	24	7.4%
11-12 PM			12	15	13	23	11	14			12	17	29	9.0%
12-1 PM			15	11	8	17	13	18			12	15	27	8.4%
1-2 PM			14	14	10	14	16	12			13	13	27	8.2%
2-3 PM			12	13	18	18	15	13			15	15	30	9.1%
3-4 PM			16	14	20	15	24	12			20	14	34	10.4%
4-5 PM			13	15	14	12	14	15			14	14	28	8.5%
5-6 PM			14	16	10	11	13	8			12	12	24	7.4%
6-7 PM			8	6	4	12	3	11			5	10	15	4.5%
7-8 PM			4	4	7	5	3	2			5	4	8	2.6%
8-9 PM			2	0	4	3	6	0			4	1	5	1.5%
9-10 PM			5	5	5	3	1	1			4	3	7	2.1%
10-11 PM			0	0	1	1	0	0			0	0	1	0.2%
11-12 AM			1	1	0	1	0	0			0	1	1	0.3%
LANES			148	166	153	190	150	168			150	175	325	100.0%
TOTAL			314		343		318				330			
	MON		TUE		WED		THURS		FRI		WK AVG			

PEAK HOUR						TOTAL VEHICALS-PEAK PERIODS		2 HOUR PEAK INTERVALS					
MAX. 7 - 9 am PEAK HOUR	24	⇒	7.4%	between	8-9 AM	145	⇒	6 HR TOTAL		2 HR AM (7 - 9 AM)			
MAX. 7 - 11 am PEAK HOUR	24	⇒	7.4%	between	8-9 AM	88	⇒	4 HR TOTAL		VEH / HR	VEH / 2HR	2 HR %	
MAX. 11 am - 1 pm PEAK HOUR	29	⇒	9.0%	between	11-12 PM					7-8 AM	12	36	11.2%
MAX. 11 am - 3 pm PEAK HOUR	30	⇒	9.1%	between	2-3 PM			24 HOUR FACTORS		8-9 AM	24		
MAX. 4 - 6 pm PEAK HOUR	28	⇒	8.5%	between	4-5 PM	2.25	⇒	6-24 HR FACT.		2 HR NOON (11 - 1 PM)			
MAX. 3 - 6 pm PEAK HOUR	34	⇒	10.4%	between	3-4 PM	3.69	⇒	4-24 HR FACT.		VEH / HR	VEH / 2HR	2 HR %	
										11-12 PM	29	57	17.4%
										12-1 PM	27		
										2 HR PM (4 - 6 PM)			
										VEH / HR	VEH / 2HR	2 HR %	
										4-5 PM	28	52	15.9%
										5-6 PM	24		

Palmer Rd between Quadra St and Cumberland Rd

Westbound

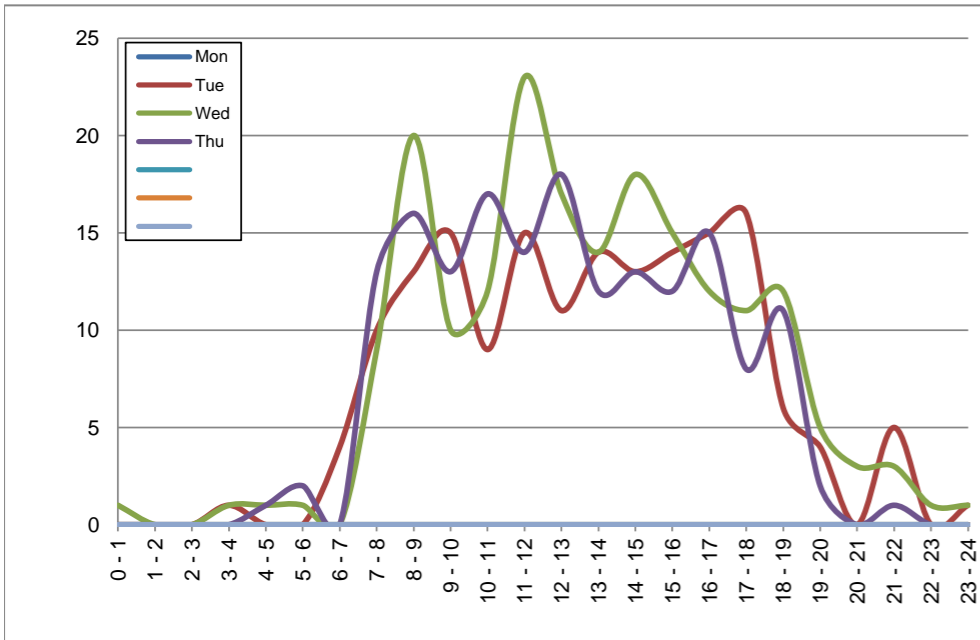
November 23, 2020 to November 26, 2020

Hourly Volumes

Time Period	Mon	Tue	Wed	Thu			
	Nov 23	Nov 24	Nov 25	Nov 26			
0 - 1		0	1	0			
1 - 2		0	0	0			
2 - 3		0	0	0			
3 - 4		1	1	0			
4 - 5		0	1	1			
5 - 6		0	1	2			
6 - 7		4	0	0			
7 - 8		10	9	13			
8 - 9		13	20	16			
9 - 10		15	10	13			
10 - 11		9	12	17			
11 - 12		15	23	14			
12 - 13		11	17	18			
13 - 14		14	14	12			
14 - 15		13	18	13			
15 - 16		14	15	12			
16 - 17		15	12	15			
17 - 18		16	11	8			
18 - 19		6	12	11			
19 - 20		4	5	2			
20 - 21		0	3	0			
21 - 22		5	3	1			
22 - 23		0	1	0			
23 - 24		1	1	0			
Day Total		166	190	168			

15-Minute Volumes

Time Start	Mon	Tue	Wed	Thu			
	Nov 23	Nov 24	Nov 25	Nov 26			
0:00		0	0	0			
0:15		0	1	0			
0:30		0	0	0			
0:45		0	0	0			
1:00		0	0	0			
1:15		0	0	0			
1:30		0	0	0			
1:45		0	0	0			
2:00		0	0	0			
2:15		0	0	0			
2:30		0	0	0			
2:45		0	0	0			
3:00		1	0	0			
3:15		0	0	0			
3:30		0	1	0			
3:45		0	0	0			
4:00		0	0	0			
4:15		0	0	1			
4:30		0	0	0			
4:45		0	1	0			
5:00		0	0	2			
5:15		0	0	0			
5:30		0	0	0			
5:45		0	1	0			
6:00		0	0	0			
6:15		2	0	0			
6:30		0	0	0			
6:45		2	0	0			
7:00		3	3	3			
7:15		2	1	3			
7:30		0	1	1			
7:45		5	4	6			
8:00		3	7	4			
8:15		3	5	6			
8:30		4	4	3			
8:45		3	4	3			
9:00		1	3	5			
9:15		6	3	2			
9:30		5	0	5			
9:45		3	4	1			
10:00		2	4	3			
10:15		3	3	4			
10:30		4	2	5			
10:45		0	3	5			
11:00		3	7	2			
11:15		4	11	4			
11:30		5	3	5			
11:45		3	2	3			
12:00			1	5	7		
12:15			2	7	2		
12:30			5	3	4		
12:45			3	2	5		
13:00			1	3	4		
13:15			8	2	2		
13:30			4	4	0		
13:45			1	5	6		
14:00			2	3	3		
14:15			3	4	0		
14:30			4	5	5		
14:45			4	6	5		
15:00			4	5	3		
15:15			3	2	6		
15:30			3	4	1		
15:45			4	4	2		
16:00			5	3	4		
16:15			6	2	2		
16:30			3	3	3		
16:45			1	4	6		
17:00			4	2	2		
17:15			3	4	0		
17:30			7	5	3		
17:45			2	0	3		
18:00			5	5	4		
18:15			0	2	5		
18:30			0	0	2		
18:45			1	5	0		
19:00			0	2	0		
19:15			2	1	1		
19:30			0	0	1		
19:45			2	2	0		
20:00			0	0	0		
20:15			0	1	0		
20:30			0	2	0		
20:45			0	0	0		
21:00			1	1	1		
21:15			1	1	0		
21:30			2	0	0		
21:45			1	1	0		
22:00			0	0	0		
22:15			0	0	0		
22:30			0	1	0		
22:45			0	0	0		
23:00			0	0	0		
23:15			1	0	0		
23:30			0	1	0		
23:45			0	0	0		



Site notes:

Palmer Rd between Quadra St and Cumberland Rd

Eastbound

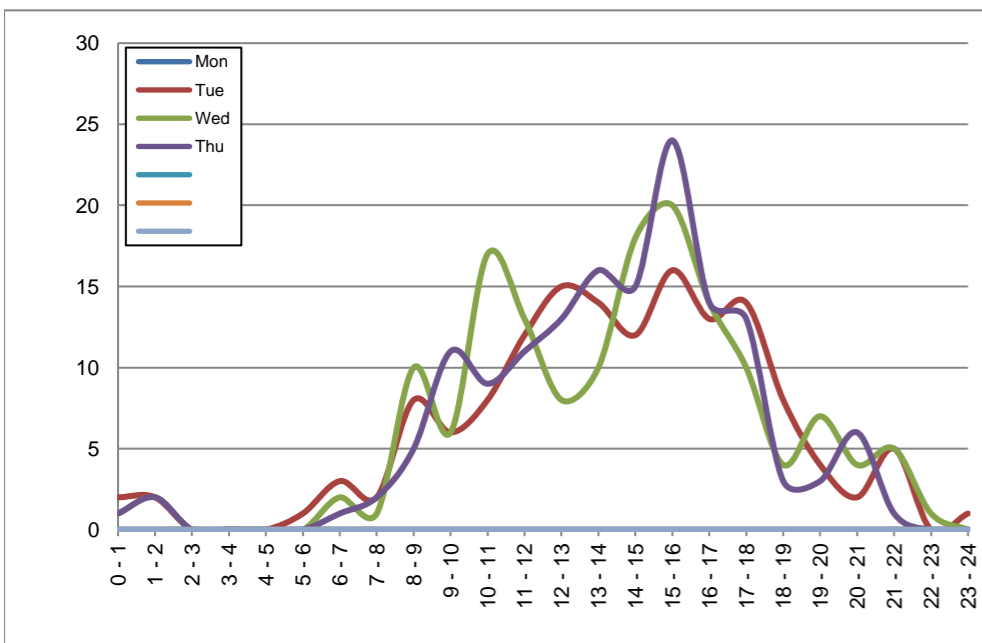
November 23, 2020 to November 26, 2020

Hourly Volumes

Time Period	Mon	Tue	Wed	Thu			
	Nov 23	Nov 24	Nov 25	Nov 26			
0 - 1		2	1	1			
1 - 2		2	2	2			
2 - 3		0	0	0			
3 - 4		0	0	0			
4 - 5		0	0	0			
5 - 6		1	0	0			
6 - 7		3	2	1			
7 - 8		2	1	2			
8 - 9		8	10	5			
9 - 10		6	6	11			
10 - 11		8	17	9			
11 - 12		12	13	11			
12 - 13		15	8	13			
13 - 14		14	10	16			
14 - 15		12	18	15			
15 - 16		16	20	24			
16 - 17		13	14	14			
17 - 18		14	10	13			
18 - 19		8	4	3			
19 - 20		4	7	3			
20 - 21		2	4	6			
21 - 22		5	5	1			
22 - 23		0	1	0			
23 - 24		1	0	0			
Day Total		148	153	150			

15-Minute Volumes

Time Start	Mon	Tue	Wed	Thu			
	Nov 23	Nov 24	Nov 25	Nov 26			
0:00		0	0	0			
0:15		0	0	1			
0:30		1	1	0			
0:45		1	0	0			
1:00		0	0	0			
1:15		0	0	1			
1:30		1	1	1			
1:45		1	1	0			
2:00		0	0	0			
2:15		0	0	0			
2:30		0	0	0			
2:45		0	0	0			
3:00		0	0	0			
3:15		0	0	0			
3:30		0	0	0			
3:45		0	0	0			
4:00		0	0	0			
4:15		0	0	0			
4:30		0	0	0			
4:45		0	0	0			
5:00		0	0	0			
5:15		0	0	0			
5:30		0	0	0			
5:45		1	0	0			
6:00		0	1	0			
6:15		1	0	0			
6:30		2	1	1			
6:45		0	0	0			
7:00		1	1	1			
7:15		0	0	0			
7:30		0	0	0			
7:45		1	0	1			
8:00		2	0	1			
8:15		3	1	1			
8:30		2	1	2			
8:45		1	8	1			
9:00		1	2	6			
9:15		2	1	2			
9:30		0	1	2			
9:45		3	2	1			
10:00		3	4	3			
10:15		2	2	2			
10:30		2	5	1			
10:45		1	6	3			
11:00		1	5	0			
11:15		4	1	5			
11:30		5	4	4			
11:45		2	3	2			
12:00			4	2			
12:15			1	4			
12:30			5	1			
12:45			5	1			
13:00			4	3			
13:15			2	2			
13:30			2	3			
13:45			6	2			
14:00			2	4			
14:15			1	2			
14:30			3	6			
14:45			6	6			
15:00			3	2			
15:15			4	7			
15:30			6	7			
15:45			3	4			
16:00			4	4			
16:15			5	3			
16:30			3	1			
16:45			1	6			
17:00			3	3			
17:15			2	2			
17:30			6	1			
17:45			3	4			
18:00			5	1			
18:15			0	1			
18:30			2	0			
18:45			1	2			
19:00			0	1			
19:15			2	2			
19:30			2	4			
19:45			0	0			
20:00			1	1			
20:15			1	2			
20:30			0	1			
20:45			0	0			
21:00			1	0			
21:15			2	1			
21:30			2	3			
21:45			0	1			
22:00			0	0			
22:15			0	0			
22:30			0	1			
22:45			0	0			
23:00			1	0			
23:15			0	0			
23:30			0	0			
23:45			0	0			



Site notes:

Vehicle Speed Summary

Saanich Engineering Department

Count Id: R0834-01

Filename: Palmer Rd between Quadra St and Cumberland Rd-Nov-2020.xlsm

Location: Palmer Rd between Quadra St and Cumberland Rd

Note:

Direction: **East-West**

Dates: **November 24, 2020 To November 27, 2020**

Filtered data

AVG. SPEED	21 mph	34 km/h
50 % SPEED	22 mph	35 km/h
85 % SPEED	26 mph	41 km/h
95 % SPEED	28 mph	45 km/h

Location Map



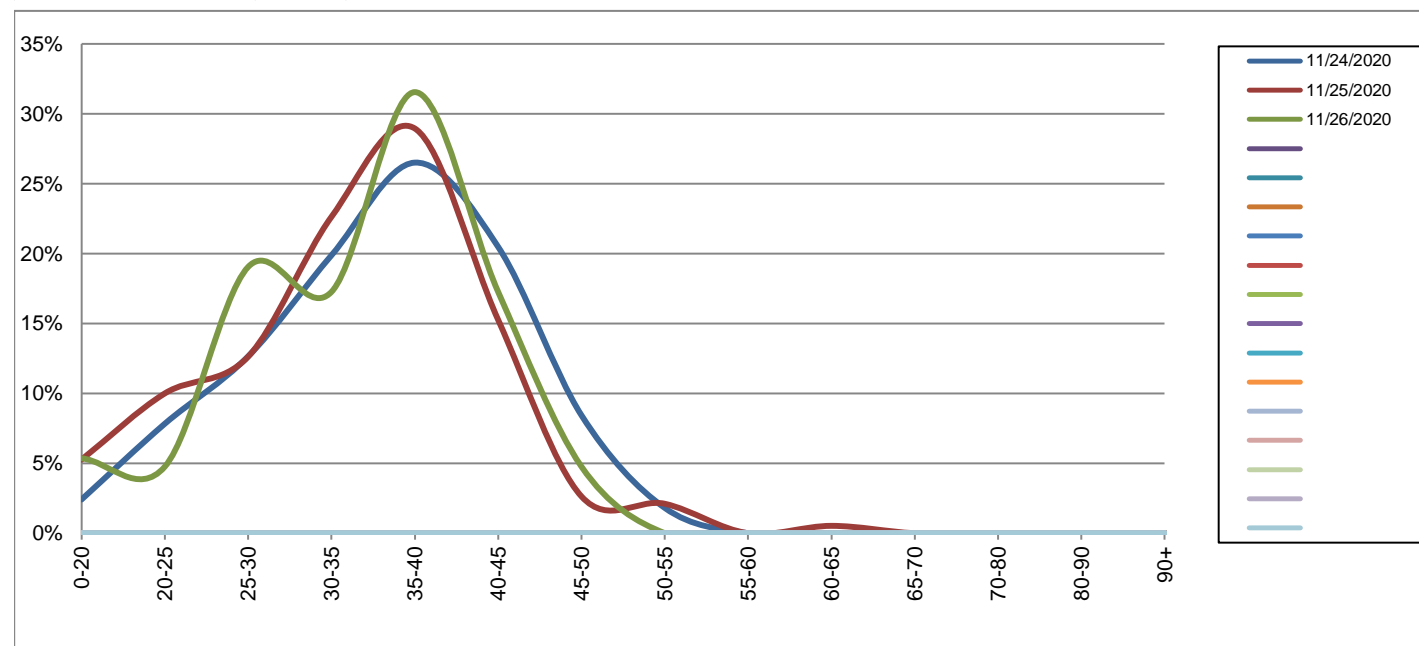
Palmer Rd between Quadra St and Cumberland Rd

Westbound
November 24, 2020 to November 26, 2020

Daily Speed Bin Percentages															Daily Speed Bin Volumes														Total	Avg.
Bin #	1	2	3	4	5	6	7	8	9	10	11	12	13	14	1	2	3	4	5	6	7	8	9	10	11	12	13	14	Volume	Speed
Bin Speeds	0-20	20-25	25-30	30-35	35-40	40-45	45-50	50-55	55-60	60-65	65-70	70-80	80-90	90+	0-20	20-25	25-30	30-35	35-40	40-45	45-50	50-55	55-60	60-65	65-70	70-80	80-90	90+		
11/24/2020	2.4%	7.8%	12.7%	19.9%	26.5%	20.5%	8.4%	1.8%	0.0%	0.0%	0.0%	0.0%	0.0%	0.0%	4	13	21	33	44	34	14	3	0	0	0	0	0	0	166	36
11/25/2020	5.3%	10.0%	12.6%	22.6%	28.9%	15.3%	2.6%	2.1%	0.0%	0.5%	0.0%	0.0%	0.0%	0.0%	10	19	24	43	55	29	5	4	0	1	0	0	0	0	190	34
11/26/2020	5.4%	4.8%	19.0%	17.3%	31.5%	17.3%	4.8%	0.0%	0.0%	0.0%	0.0%	0.0%	0.0%	0.0%	9	8	32	29	53	29	8	0	0	0	0	0	0	0	168	34
Total	4.4%	7.6%	14.7%	20.0%	29.0%	17.6%	5.2%	1.3%	0.0%	0.2%	0.0%	0.0%	0.0%	0.0%	23	40	77	105	152	92	27	7	0	1	0	0	0	0	524	34

Speed Data Summary

Bin #	1	2	3	4	5	6	7	8	9	10	11	12	13	14	Total
Bin Speeds	0-20	20-25	25-30	30-35	35-40	40-45	45-50	50-55	55-60	60-65	65-70	70-80	80-90	90+	
Survey Total	23	40	77	105	152	92	27	7	0	1	0	0	0	0	524
% Total	4.4%	7.6%	14.7%	20.0%	29.0%	17.6%	5.2%	1.3%	0.0%	0.2%	0.0%	0.0%	0.0%	0.0%	100%
Accumulated %	4.4%	12.0%	26.7%	46.8%	75.8%	93.3%	98.5%	99.8%	99.8%	100.0%	100.0%	100.0%	100.0%	100%	
Inverse Accum. %	95.6%	88.0%	73.3%	53.2%	24.2%	6.7%	1.5%	0.2%	0.2%	0.0%	0.0%	0.0%	0.0%	0.0%	
Average Speed	34 KM/H														



Site notes:

Palmer Rd between Quadra St and Cumberland Rd

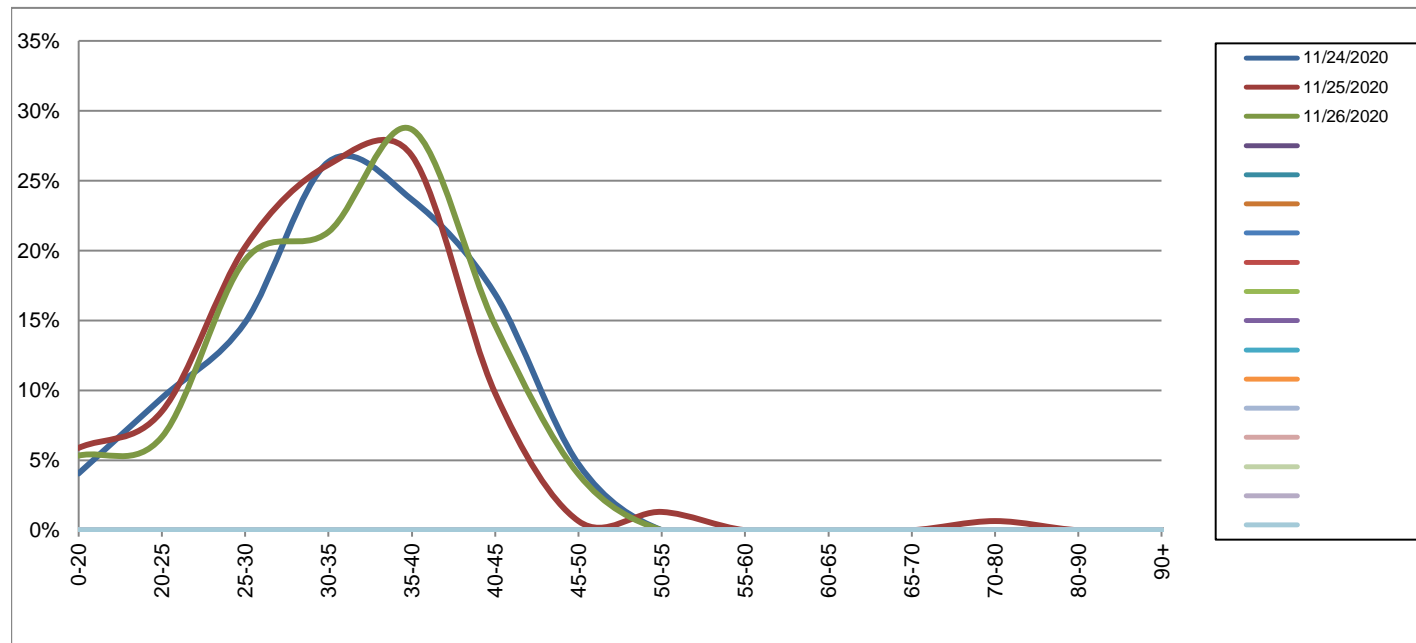
Eastbound

November 24, 2020 to November 26, 2020

Daily Speed Bin Percentages															Daily Speed Bin Volumes														Total	Avg.
Bin #	1	2	3	4	5	6	7	8	9	10	11	12	13	14	1	2	3	4	5	6	7	8	9	10	11	12	13	14	Volume	Speed
Bin Speeds	0-20	20-25	25-30	30-35	35-40	40-45	45-50	50-55	55-60	60-65	65-70	70-80	80-90	90+	0-20	20-25	25-30	30-35	35-40	40-45	45-50	50-55	55-60	60-65	65-70	70-80	80-90	90+		
11/24/2020	4.1%	9.5%	14.9%	26.4%	23.6%	16.9%	4.7%	0.0%	0.0%	0.0%	0.0%	0.0%	0.0%	0.0%	6	14	22	39	35	25	7	0	0	0	0	0	0	0	148	33
11/25/2020	5.9%	8.5%	20.3%	26.1%	26.8%	9.8%	0.7%	1.3%	0.0%	0.0%	0.0%	0.7%	0.0%	0.0%	9	13	31	40	41	15	1	2	0	0	0	1	0	0	153	32
11/26/2020	5.3%	6.7%	19.3%	21.3%	28.7%	14.7%	4.0%	0.0%	0.0%	0.0%	0.0%	0.0%	0.0%	0.0%	8	10	29	32	43	22	6	0	0	0	0	0	0	0	150	33
Total	5.1%	8.2%	18.2%	24.6%	26.4%	13.7%	3.1%	0.4%	0.0%	0.0%	0.0%	0.2%	0.0%	0.0%	23	37	82	111	119	62	14	2	0	0	0	1	0	0	451	33

Speed Data Summary

Bin #	1	2	3	4	5	6	7	8	9	10	11	12	13	14	Total
Bin Speeds	0-20	20-25	25-30	30-35	35-40	40-45	45-50	50-55	55-60	60-65	65-70	70-80	80-90	90+	
Survey Total	23	37	82	111	119	62	14	2	0	0	0	1	0	0	451
% Total	5.1%	8.2%	18.2%	24.6%	26.4%	13.7%	3.1%	0.4%	0.0%	0.0%	0.0%	0.2%	0.0%	0.0%	100%
Accumulated %	5.1%	13.3%	31.5%	56.1%	82.5%	96.2%	99.3%	99.8%	99.8%	99.8%	99.8%	100.0%	100.0%	100%	
Inverse Accum. %	94.9%	86.7%	68.5%	43.9%	17.5%	3.8%	0.7%	0.2%	0.2%	0.2%	0.2%	0.0%	0.0%	0.0%	
Average Speed	33 KM/H														



Site notes:

Palmer Rd between Quadra St and Cumberland Rd

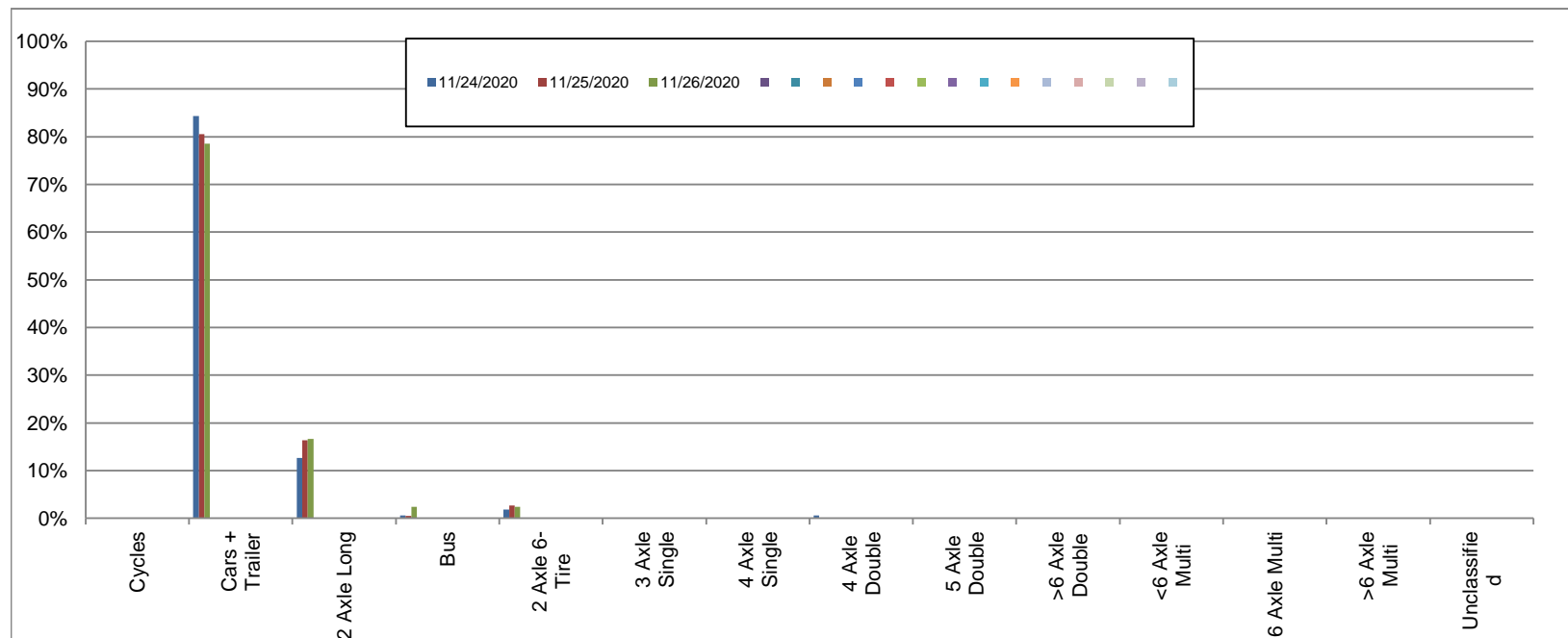
Westbound

November 24, 2020 to November 26, 2020

Daily Class Bin Percentages															Daily Class Bin Volumes														
Bin #	1	2	3	4	5	6	7	8	9	10	11	12	13	14	1	2	3	4	5	6	7	8	9	10	11	12	13	14	Total Volume
Bin Class	Cycles	Cars + Trailer	2 Axle Long	Bus	2 Axle 6-Tire	3 Axle Single	4 Axle Single	4 Axle Double	5 Axle Double	>6 Axle Double	<6 Axle Multi	6 Axle Multi	>6 Axle Multi	Unclassified	Cycles	Cars + Trailer	2 Axle Long	Bus	2 Axle 6-Tire	3 Axle Single	4 Axle Single	4 Axle Double	5 Axle Double	>6 Axle Double	<6 Axle Multi	6 Axle Multi	>6 Axle Multi	Unclassified	
11/24/2020	0.0%	84.3%	12.7%	0.6%	1.8%	0.0%	0.0%	0.6%	0.0%	0.0%	0.0%	0.0%	0.0%	0.0%	0	140	21	1	3	0	0	1	0	0	0	0	0	0	166
11/25/2020	0.0%	80.5%	16.3%	0.5%	2.6%	0.0%	0.0%	0.0%	0.0%	0.0%	0.0%	0.0%	0.0%	0.0%	0	153	31	1	5	0	0	0	0	0	0	0	0	0	190
11/26/2020	0.0%	78.6%	16.7%	2.4%	2.4%	0.0%	0.0%	0.0%	0.0%	0.0%	0.0%	0.0%	0.0%	0.0%	0	132	28	4	4	0	0	0	0	0	0	0	0	0	168
Total	0.0%	81.1%	15.3%	1.1%	2.3%	0.0%	0.0%	0.2%	0.0%	0.0%	0.0%	0.0%	0.0%	0.0%	0	425	80	6	12	0	0	1	0	0	0	0	0	0	524

Class Data Summary

Bin #	1	2	3	4	5	6	7	8	9	10	11	12	13	14	Total Volume
Bin Class	Cycles	Cars + Trailer	2 Axle Long	Bus	2 Axle 6-Tire	3 Axle Single	4 Axle Single	4 Axle Double	5 Axle Double	>6 Axle Double	<6 Axle Multi	6 Axle Multi	>6 Axle Multi	Unclassified	Total Volume
Survey Total	0	425	80	6	12	0	0	1	0	0	0	0	0	0	524
% Total	0.0%	81.1%	15.3%	1.1%	2.3%	0.0%	0.0%	0.2%	0.0%	0.0%	0.0%	0.0%	0.0%	0.0%	100%
Accumulated %	0.0%	81.1%	96.4%	97.5%	99.8%	99.8%	99.8%	100.0%	100.0%	100.0%	100.0%	100.0%	100.0%	100.0%	
Inv. Accum. %	100.0%	18.9%	3.6%	2.5%	0.2%	0.2%	0.2%	0.0%	0.0%	0.0%	0.0%	0.0%	0.0%	0.0%	



Classification Descriptions

Bin #	Bin Description
1	Motorcycles
2	Passenger cars, including those with recreational trailers
3	2-axle pick-ups, vans, and RVs, including those with recreational trailers
4	Buses
5	2-axle, 6-tire single units
6	3-axle single units
7	4-axle single units
8	3-axle or 4-axle double unit
9	5-axle double unit
10	6-, 7-, or 8-axle double unit
11	5-axle multiple unit
12	6-axle multiple unit
13	7-or-more-axle multiple unit
14	Vehicles that could not be classified

Site notes:

Palmer Rd between Quadra St and Cumberland Rd

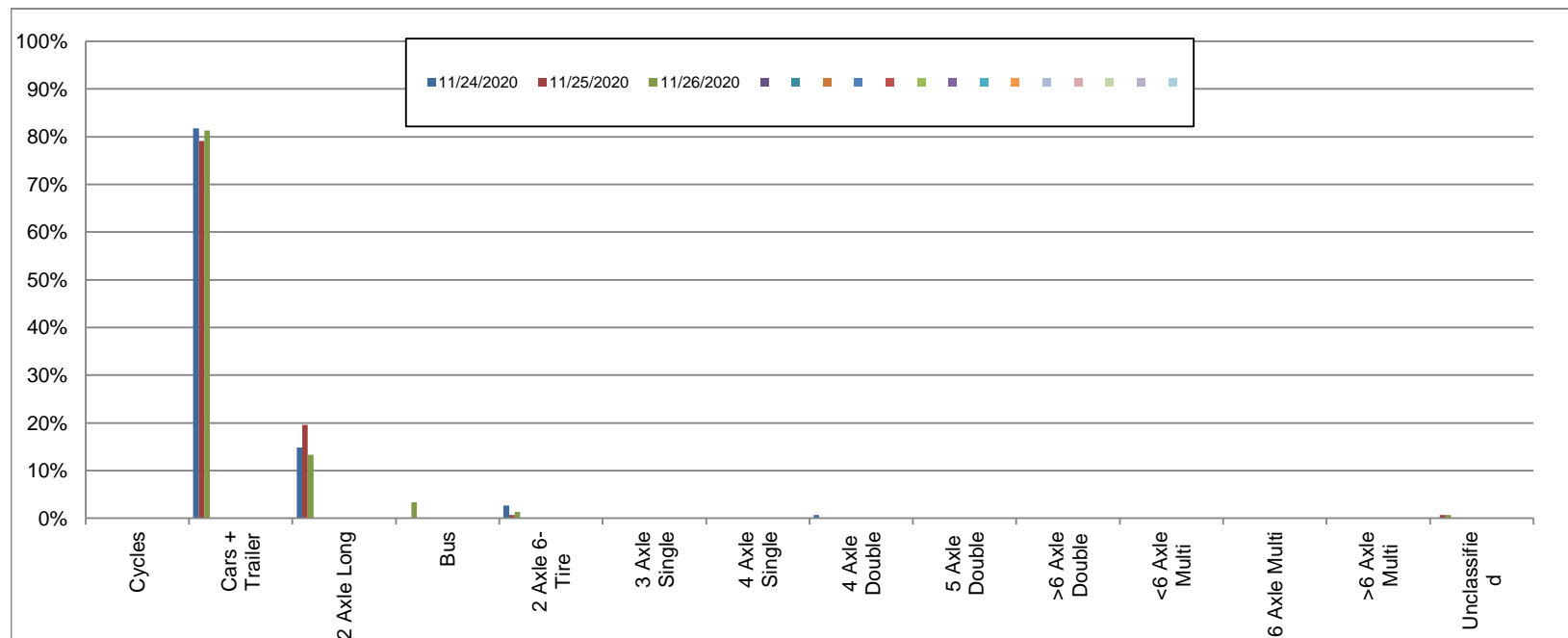
Eastbound

November 24, 2020 to November 26, 2020

Daily Class Bin Percentages															Daily Class Bin Volumes											Total Volume				
Bin #	1	2	3	4	5	6	7	8	9	10	11	12	13	14	1	2	3	4	5	6	7	8	9	10	11		12	13	14	
Bin Class	Cycles	Cars + Trailer	2 Axle Long	Bus	2 Axle 6-Tire	3 Axle Single	4 Axle Single	4 Axle Double	5 Axle Double	>6 Axle Double	<6 Axle Multi	6 Axle Multi	>6 Axle Multi	Unclassified	Cycles	Cars + Trailer	2 Axle Long	Bus	2 Axle 6-Tire	3 Axle Single	4 Axle Single	4 Axle Double	5 Axle Double	>6 Axle Double	<6 Axle Multi	6 Axle Multi	>6 Axle Multi	Unclassified		
11/24/2020	0.0%	81.8%	14.9%	0.0%	2.7%	0.0%	0.0%	0.7%	0.0%	0.0%	0.0%	0.0%	0.0%	0.0%	0	121	22	0	4	0	0	1	0	0	0	0	0	0	0	148
11/25/2020	0.0%	79.1%	19.6%	0.0%	0.7%	0.0%	0.0%	0.0%	0.0%	0.0%	0.0%	0.0%	0.0%	0.7%	0	121	30	0	1	0	0	0	0	0	0	0	0	0	1	153
11/26/2020	0.0%	81.3%	13.3%	3.3%	1.3%	0.0%	0.0%	0.0%	0.0%	0.0%	0.0%	0.0%	0.0%	0.7%	0	122	20	5	2	0	0	0	0	0	0	0	0	0	1	150
Total	0.0%	80.7%	16.0%	1.1%	1.6%	0.0%	0.0%	0.2%	0.0%	0.0%	0.0%	0.0%	0.0%	0.4%	0	364	72	5	7	0	0	1	0	0	0	0	0	2	451	

Class Data Summary

Bin #	1	2	3	4	5	6	7	8	9	10	11	12	13	14	Total Volume
Bin Class	Cycles	Cars + Trailer	2 Axle Long	Bus	2 Axle 6-Tire	3 Axle Single	4 Axle Single	4 Axle Double	5 Axle Double	>6 Axle Double	<6 Axle Multi	6 Axle Multi	>6 Axle Multi	Unclassified	Total Volume
Survey Total	0	364	72	5	7	0	0	1	0	0	0	0	0	2	451
% Total	0.0%	80.7%	16.0%	1.1%	1.6%	0.0%	0.0%	0.2%	0.0%	0.0%	0.0%	0.0%	0.0%	0.4%	100%
Accumulated %	0.0%	80.7%	96.7%	97.8%	99.3%	99.3%	99.3%	99.6%	99.6%	99.6%	99.6%	99.6%	99.6%	100.0%	
Inv. Accum. %	100.0%	19.3%	3.3%	2.2%	0.7%	0.7%	0.7%	0.4%	0.4%	0.4%	0.4%	0.4%	0.4%	0.0%	



Classification Descriptions

Bin #	Bin Description
1	Motorcycles
2	Passenger cars, including those with recreational trailers
3	2-axle pick-ups, vans, and RVs, including those with recreational trailers
4	Buses
5	2-axle, 6-tire single units
6	3-axle single units
7	4-axle single units
8	3-axle or 4-axle double unit
9	5-axle double unit
10	6-, 7-, or 8-axle double unit
11	5-axle multiple unit
12	6-axle multiple unit
13	7-or-more-axle multiple unit
14	Vehicles that could not be classified

Site notes: